

Iowa SWCS Annual Meeting

Friday, September 7, 2018
Longhouse at Chichaqua Bottoms
8700 NE 126th Avenue
Maxwell, Iowa 50161



Iowa Chapter

The Chichaqua Bottoms Greenbelt park is located approximately five miles east of Elkhart. The Longhouse is next to the campgrounds and wildlife area, south of the intersection of NE 80th Street & NE 134th Avenue (F22)– *see enclosed maps.*

AGENDA

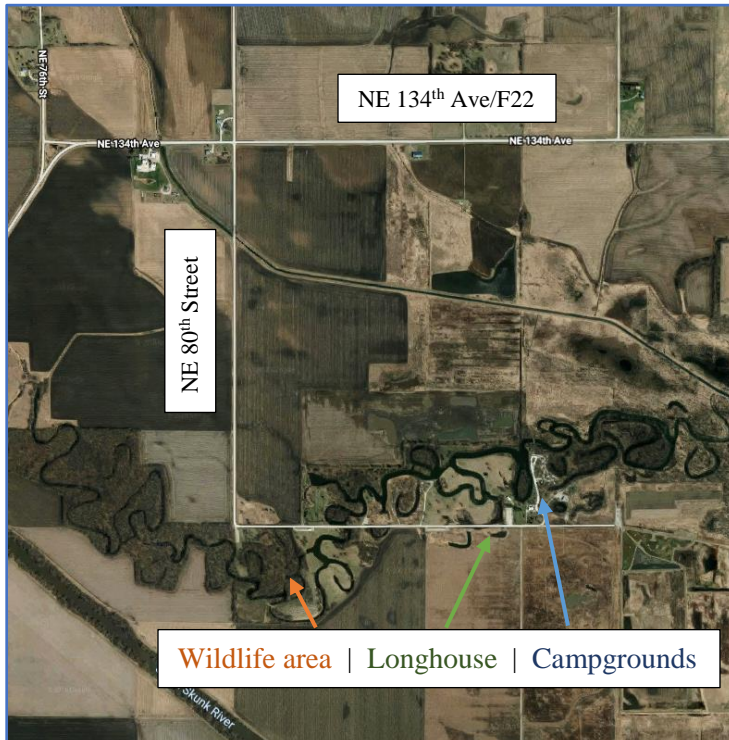
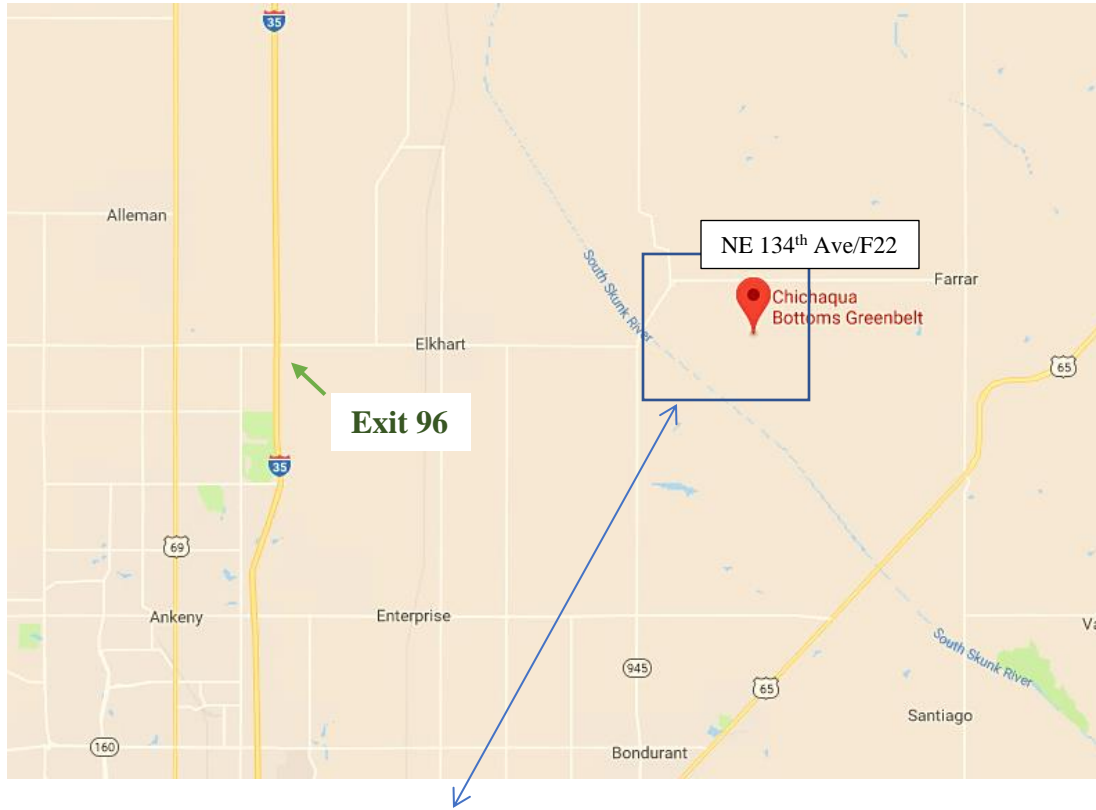
- 9:00 Registration & Morning Refreshments
Ballots for officer election available at check-in (President-Elect; Treasurer; NE, & SW Chairs up for election)
- 9:30 Welcome and Introductions – Heidi Ackerman
- 10:15 Clare Lindahl, CEO of the Soil & Water Conservation Society
- 11:00 *2018 Iowa SWCS Election Ballots must be turned in to be counted*
- 11:30 **Iowa SWCS Annual Business Meeting**
Call to Order – Heidi Ackerman
President’s Report – Heidi Ackerman
Awards – Anna Golightly
Scholarships – (Olivia LaGrange)
Secretary’s Report – Holly Giombi
Treasurer’s Report – Alan Lauver
Membership Report – Clare Lindahl
Board Election Results – Holly Giombi
Adjourn Business Meeting
- 12:15 Lunch provided by B Fabulous BBQ
- 1:15 **Chichaqua Bottoms Greenbelt Talk & Tour** – Doug Sheeley, Polk County Conservation Board
Doug will explain how the greenbelt came to be, as well as the ongoing developments and studies at this county-operated natural area. Join us for a walk around the park!
- 4:00 **Social Event:** Reclaimed Rails Brewing Company, 101 Main Street SE, Bondurant, Iowa
Tour this small-town brewery and learn about their conservation-minded practices and reclaimed furnishings. And enjoy a wide range of brews with your fellow SWCS members!

Iowa SWCS Annual Meeting

Friday, September 7, 2018
Longhouse at Chichaqua Bottoms
8700 NE 126th Avenue
Maxwell, Iowa 50161



Iowa Chapter



Directions to the Chichaqua Bottoms Greenbelt park:

From I-35:

- Take exit 96, and head east on 126th Avenue toward Elkhart.
- Continue on 126th for 5.5 miles, through Elkhart and to a T-intersection.
- At the T-intersection, turn left/north onto NE Yoder Drive.
- Follow NE Yoder Drive as it curves to the east and becomes NE 134th Avenue.
- Turn right/south at the first intersection (NE 80th Street) and follow the road south and east, through the swamps, to the Longhouse (on your left/north)—if you get to the campgrounds, you went too far!

Iowa SWCS Annual Meeting

Friday, September 7, 2018
Longhouse at Chichaqua Bottoms
8700 NE 126th Avenue
Maxwell, Iowa 50161



Iowa Chapter

Registration form is due by Friday, August 31, 2018. Payment can be made at the door. Registrants will be held accountable for payment and no refunds will be issued for cancellations after **Friday, August 31, 2018.**

Name: _____

Address: _____

Phone: _____

Email: _____

Agency/Business you work for: _____

Are you a member of SWCS? _____ Yes _____ No

Registration:

_____ **Member – \$20** (includes meeting, lunch, & tour)

_____ **New, Non-Member Membership DEAL – \$25**
(includes meeting, lunch, tour, water bottle giveaway* & A YEAR
LONG MEMBERSHIP TO SWCS – see list of membership benefits on
last page)



Total payment enclosed: _____

Make checks payable to: **Iowa SWCS**

Special dietary needs or other accommodations required: _____

Please mail registration and payment to:

Dallas SWCD
c/o Heidi Ackerman
1918 Greene Street
Adel, Iowa 50003

Or fill out and e-mail to Heidi.Ackerman@ia.usda.gov by Friday, August 31, 2018.
Payment can be made at the door.

*water bottles available while supplies last

Iowa SWCS Annual Meeting

Friday, September 7, 2018
Longhouse at Chichaqua Bottoms
8700 NE 126th Avenue
Maxwell, Iowa 50161



Iowa Chapter

Iowa SWCS Membership Benefits

Members of the Iowa Soil and Water Conservation Society receive local and national benefits including:

- Opportunities to **network** with and learn from professionals from many disciplines through local, regional, and international meetings.
- **Interaction and education through local chapter membership** in the United States and Canada.
- *Journal of Soil and Water Conservation*, a multidisciplinary journal of practice, policy, and perspectives.
- *Conservogram*, a monthly e-newsletter of Society and chapter news and networking opportunities.
- Conservation *NewsBriefs*, a weekly e-newsletter with the latest media coverage of soil and water conservation research and policy.
- Effective **representation in policy circles** on environmental, agricultural and conservation issues.
- **Discount** on books and conference or workshop registration fees.
- **MORE!**

Learn more at:

www.iaswcs.org



@IowaSoilAndWaterConservationSociety